



RAM 220

COMUNELLO
AUTOMATION

Electromechanical actuators with telescopic rod for residential swing gates.
For leaves up to 2.2 m (max. leaf weight 200 kg) and up to 275 kg (max. leaf length 1.5 m).



24 VDC KIT

RAM 220

For swing leaves
up to 2.2 m

Ram is a line of telescopic **reversible** actuators for swing leaves up to 5 m. With their excellent resistance to any weather and Comunello-made mechanical parts, these actuators are built to last. A simple and quick emergency release lever adds to the safety and reliability of the actuator. The use of standard screw-fixed support brackets make these actuators extremely easy to install.



ARTICLE	RAM 220 24V
Operating power supply	24 VDC
Power consumption	60 W
Max. absorption.	3 A
Max. thrust	1500 N
Max stroke	374 mm
Duty cycle	30%
Protection degree (IP)	IP44
Insulation class	2
Working temperature	-20°C / +50°C
Speed	18 mm/s
Weight	14 kg



RAM 220

STRONG



Monobloc die-cast aluminium casing and epoxy-powder coating for excellent resistance to any weather.

MECHANICAL MADE IN COMUNELLO



Perfectly-matching metallic transmission gears for maximum efficiency, precision, quiet movement and reliability.

SAFE



Irreversible motor. Easy-opening emergency release mechanism with die-cast aluminium handle.

LIMIT STOPS



Disc-spring closing limit switches guarantee a smooth return movement without overloading the operator.

FIXING



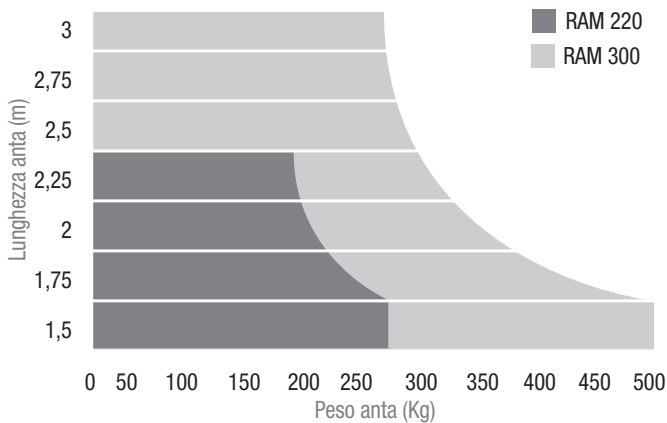
Stainless steel spindle and die-cast aluminium and zinc alloy front bracket for maximum reliability and durability.

REVERSIBLE

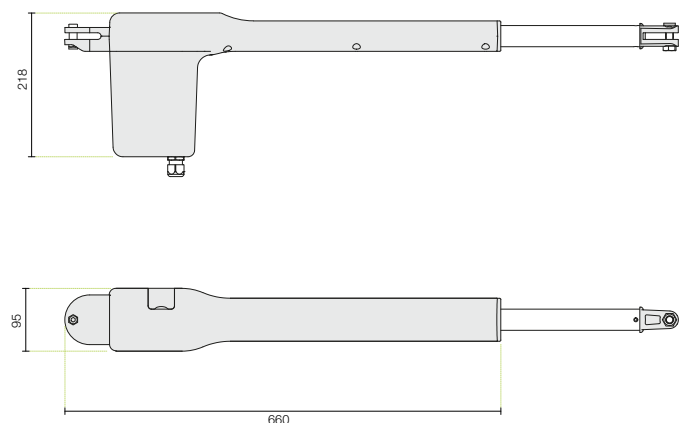


The actuator's symmetry and upper release mechanism allow the actuator to be assembled on both the left or right leaf.

OPERATING LIMITS



SIZES



MAIN FITTINGS



AC 30
OUTDOOR ANTENNA



AC 10
12 V HORIZONTAL ELECTRIC LOCK



QUAD 1 / QUAD 2 / QUAD HP
ELECTRIC SWITCHBOARD FOR 1 OR 2 OPERATORS



DART
PHOTOCELLS



SWIFT LED
BLINKING WARNING LIGHTS



VICTOR 2 RC
2 CHANNEL, ROLLING CODE REMOTE CONTROL



INDEX
KEY SELECTOR SWITCH



TACT RADIO
DIGITAL SWITCH WITH RADIO CONTROLLED KEYPAD



MAST 50
EXTRUDED ALUMINIUM COLUMN H 50 CM

PLEASE FIND A COMPLETE LIST OF ACCESSORIES ON WWW.COMUNELLO.COM