

The Nice
Wil

Nice systems
to control roadways
to residences,
companies and
communities



Nice

Home Automation

For private, public and industrial car parks.

Electromechanical barriers, 24 Vdc, with adjustable speed and anti-crushing safety feature.

Four versions:

up to 4 m (WIL4, WIL4I),

up to 6 m (WIL6, WIL6I).

Galvanised steel, painted case

or AISI 304 (WIL4I, WIL6I).

Incorporated control unit, can be removed, making wiring and maintenance easier.

Easy to install: the bar can be assembled on either the right or left hand side indifferently.

Easy to balance: linear adjustment of the spring.

The system will operate during a blackout by means of internally fitted, rechargeable batteries.

The limit switches for slowdown during both opening and closing can be adjusted both mechanically and electronically

Speed can be electronically adjusted:

WIL4, 3.5 second minimum opening time;

WIL6, 5 second opening time.

Anti-crush safety feature

in opening and closing.

Painted aluminium bar profile:

easy to assemble the signalling lights and pneumatic edge.

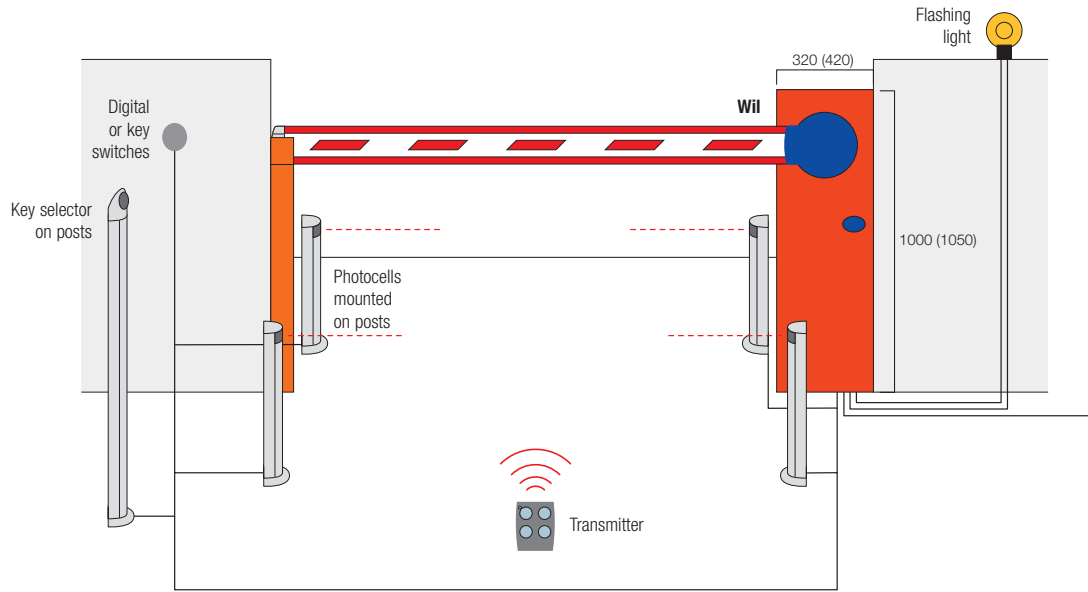
LED signalling lights:

highly efficient and long-lasting.

Easy to operate, protected key-operated unlock system.



Code	Description
WIL4	for bars max. 4 m long, irreversible 230 Vac, 24 Vdc motor, with galvanised steel painted case, supplied base plate
WIL4I	for bars max. 4 m long, irreversible 230 Vac, 24 Vdc motor, with satin stainless steel case, supplied base plate
WIL6	for bars max. 6 m long, irreversible 230 Vac, 24 Vdc motor, with galvanised steel painted case, supplied base plate
WIL6I	for bars max. 6 m long, irreversible 230 Vac, 24 Vdc motor, with satin stainless steel case, supplied base plate



Technical specifications

		WIL4 WIL4I	WIL6 WIL6I
Power	(Vac 50/60 Hz)		230
Emergency power supply	(Vdc)		24
Power absorbed	(W)	180	100
Current absorbed	(line) (A)	1	0.5
Current absorbed	(motor) (A)	8	5
Protection level	(IP)		44
Reduction ratio			1/456
Torque	(Nm)	150	220
Minimum opening time	(s)	3.5	5
Working temp.	(°C Min/Max)		-20 ÷ +50
Work cycle	(%)		80
Dimensions	(mm)	320x1000x290	420x1050x290
Weight	(kg)	46	54

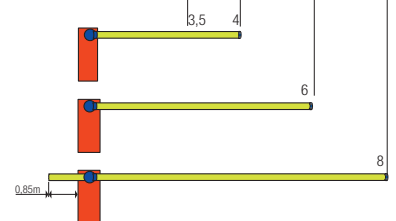
Utilisation limits

WIL6 / WIL6I up to 8 m
with WA24 (bar without accessories),
with no limits to speed

WIL6 / WIL6I up to 6 m
fully accessoried bar with
speed limit and a WA13 rack
max length of 4 m
or
WA13 rack length 6 m, without
shockproof rubber strip WA2

WIL4 / WIL4I up to 4 m
fully accessoried bar with speed limit
and a WA13 rack max length of 2 m
or
4 m rack length without shockproof
rubber strip WA2

**WIL4 / WIL4I
up to 3.5 m**
fully accessoried bar
without speed limit



Bar length (m)

*N.B. tubular aluminium bars
don't need the use of accessories
(only WA11).*

Accessories

Accessories for WIL4 / WIL4I



WA1
aluminium bar,
painted white
36x73x4250 mm
Pc/pack 1



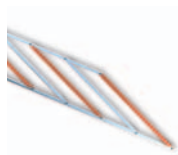
WA2
8 m pack of red
shockproof rubber
strip with caps
to close WA1 bar
Pc/pack 1



WA3
tubular aluminium bar,
painted white
Ø70x4250 mm,
suitable where there
are strong winds.
Only with WA11
Pc/pack 1



WA4
connection
for the WA3 bar
Pc/pack 1



WA13
aluminium rack (2 m)
for WA1, WA21,
WA22 bars
Pc/pack 1



WA14
joint for rods WA1
(from 1850 mm to
2400 mm)
Pc/pack 1



WA15
anchorage base with
clamps
Pc/pack 1



WA25
pivoting connection
for rectangular bars
up to 4 m
Pc/pack 1

Accessories for WIL6 / WIL6I



WA21
aluminium bar,
painted white
36x94x6250 mm
Pc/pack 1



WA22
modular bar,
plus joint painted
white, 2 sections
36x94x3125 mm
Pc/pack 2



WA6
pack 12 m of red
shockproof rubber
strip with caps
to close the bars
WA21, WA22
Pc/pack 1



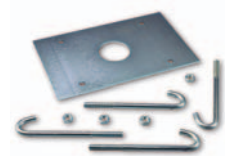
WA24
tubular telescopic bar
in white painted aluminium,
max. length 8 m, complete with
mobile support WA12, counterweight
and connector. 6 meters overall
length for transportation.
Pc/pack 1



WA7
tubular aluminium bar,
painted white Ø90x6250 mm
suitable where there are
strong winds,
only with WA11
Pc/pack 1

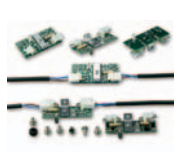


WA8
connection
for the WA7 bar
Pc/pack 1



WA16
anchorage base
with clamps
Pc/pack 1

Common accessories



WA9
pack of 6 flashing
signals, wired for WA1,
WA21, WA22 bars
Pc/pack 6



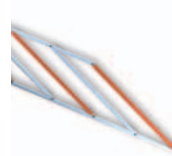
WA10
red adhesive
reflector strips
Pc./pack 24



WA11
adjustable stand for
bars
Pc./pack 1



WA12
mobile stand
for bars
Pc/pack 1



WA13
aluminium
rack (2 m)
for WA1, WA21,
WA22 bars
Pc/pack 1



WA20
spare control unit



CARICA
plug-in card
for battery charger
Pc./pack 1



B12-B
12 V 6 Ah batteries
Pc./pack 1



PO
support bracket
Pc/pack 4