

*Dear Readers,*

*Thank you for your interest in TECSEDO.*

*The history of the Company we founded represents the natural evolution of more than a half-century family tradition in the sector of composite panels for building industry.*

*Made strong by this consolidated experience, today TECSEDO is a continuous growing business reality assured by the everyday reliability of our customers and suppliers, for whom we thank herewith.*

*Our commitment is to guarantee a long-lasting success to this "value chain" through innovation, reliability and dynamism, engaging a team of effective collaborators.*

*We wish you a good reading.*

*Best regards,*

*Michele Tognelli  
General Manager*

*Marco Tognelli  
CEO*



# ABOUT US



TECSEDO SA - TEChnologies for SEctional DOors – is a Swiss company specializing in the production and distribution of insulated metal panels, better known as “sandwich panels”, conceived specifically for the “Business to Business” international market of insulated sectional and up-and-over doors.

The production facility is located in Canton Graubünden, at San Vittore, geographical strategic position to distribute the panels throughout Europe and provide the typical Swiss quality and precision to its products.

The up-to-date range of TECSEDO® panels available in a wide variety of materials, finishes and colours can meet every customers technical and architectural requirements and adapt perfectly to the typical design of European and other world countries.

The TECSEDO® panels combined with a customised accessories range, developed by the main hardware components manufacturers, have been tested and approved by SP, Technical Research Institute of Sweden and fulfil the EN 13241-1 standard.

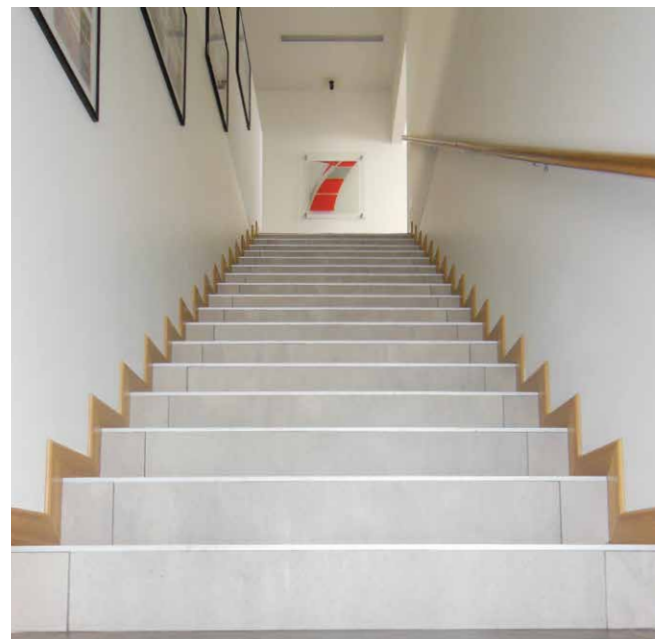
A brand-new industrial site – built in 2011 on an area of 22.000 m<sup>2</sup>, of which 8.000 m<sup>2</sup> are covered – and an innovative production plant, places TECSEDO among the European leaders of the sector.

 Swiss Manufacturer of  
SANDWICH PANELS FOR  
SECTIONAL DOORS



SWISS PRECISION FOR EUROPEAN DOORS

[www.tecseDO.com](http://www.tecseDO.com)





# COMPANY HISTORY

## THE COMPANY

"Technologies for SECTIONAL DOORS", located in Taverne (Switzerland), produces on a continuous line a wide and up to date selection of prefabricated composite panels for industrial and residential sectional overhead doors. Commitment, quality of production and raw materials, innovation and customer-oriented approach, have signified a continuous development of the company and a constant growth of production volume and range of products.

TECSEDO® panels have been effectively employed in doors operating worldwide and have been successfully tested as per EN 13241-1, with the supervision and approval of SP Swedish National Testing and Research Institute.

TECSEDO® panels and FlexForce® hardware are homologated in Initial Type Testing, of which certification is available for our customers.

Special end caps, hinges, aluminium full vision profiles for TECSEDO® panels are available in stock in all FlexForce® warehouses in Europe.

### TECSEDO S.A.

Offices and production plant:  
Industrial Zone 1  
CH-8807 Taverne  
Phone: +41 (0)91 835 20 80  
Fax: +41 (0)91 835 20 70

[www.tecseido.com](http://www.tecseido.com)  
[info@tecseido.com](mailto:info@tecseido.com)

 Swiss Manufacturer of  
Sandwich Panels for  
Sectional Doors



Founded in 2000, TECSEDO SA is the result of a business venture of managers who, taking advantage of a well-established experience in panels and sectional doors, desired to offer valid alternatives of product and service.

With this clear purpose in mind and thanks to remarkable proficiency gained through experience, at the end of the year 2000 the set-up of the continuous production line at the facility located in Taverne in Canton Ticino (CH), "ad hoc" planned and dedicated to produce panels for doors, was completed.

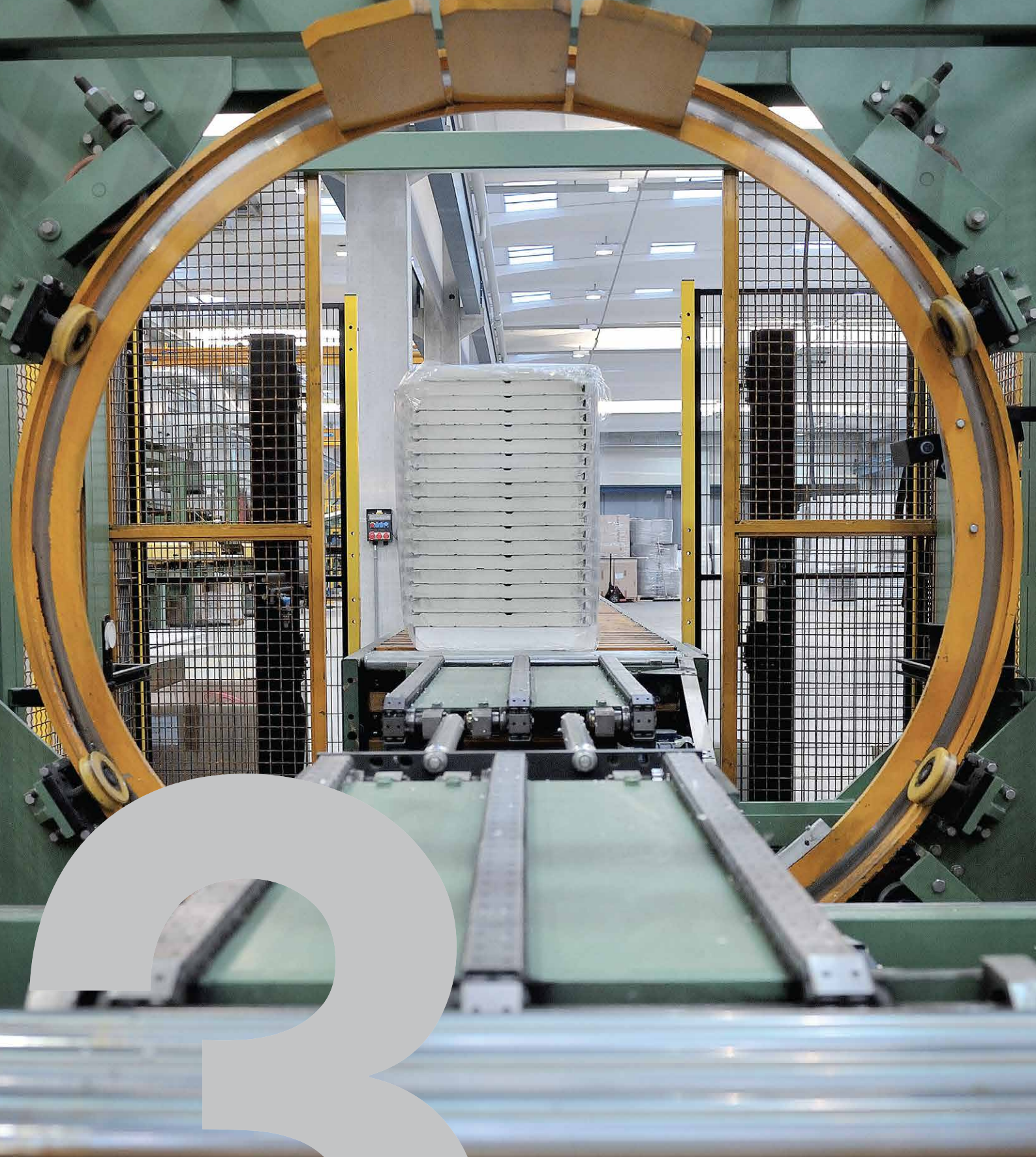
The plant started working at full capacity at the beginning of 2001, with volumes and products range growing through the years and fast promoting the TECSEDO® brand in the international market.

At the end of year 2009, to best support the evolution of increasing demands, the Company decided to manage a series of investments in terms of product range innovation and complete renewal of the production plant.

The success of the new solutions, lead TECSEDO to build in 2010 a new headquarter, in order to optimise productivity, quality standards and logistics. In May 2011, the new facility was completed: offices and plant were moved to San Vittore, Canton Graubünden (CH).

The Company production capacity achieved 2.5 million of linear meters per year; the result of the goals already achieved: from the start of the activities to the opening of the new headquarter the linear meters of TECSEDO® panels, commercialised in more than 50 countries all over the world and tested under every usage condition, are more than 10 million.





# MISSION AND VALUES





Creating day-to-day products of quality, granting with every order the best solutions, combined with highly customised services: these are the main targets of TECSEDO, always committed to fulfil the market demand completely.

This has been made possible thanks to the reliable relationship and close cooperation established by the Company through the years with customers and suppliers.

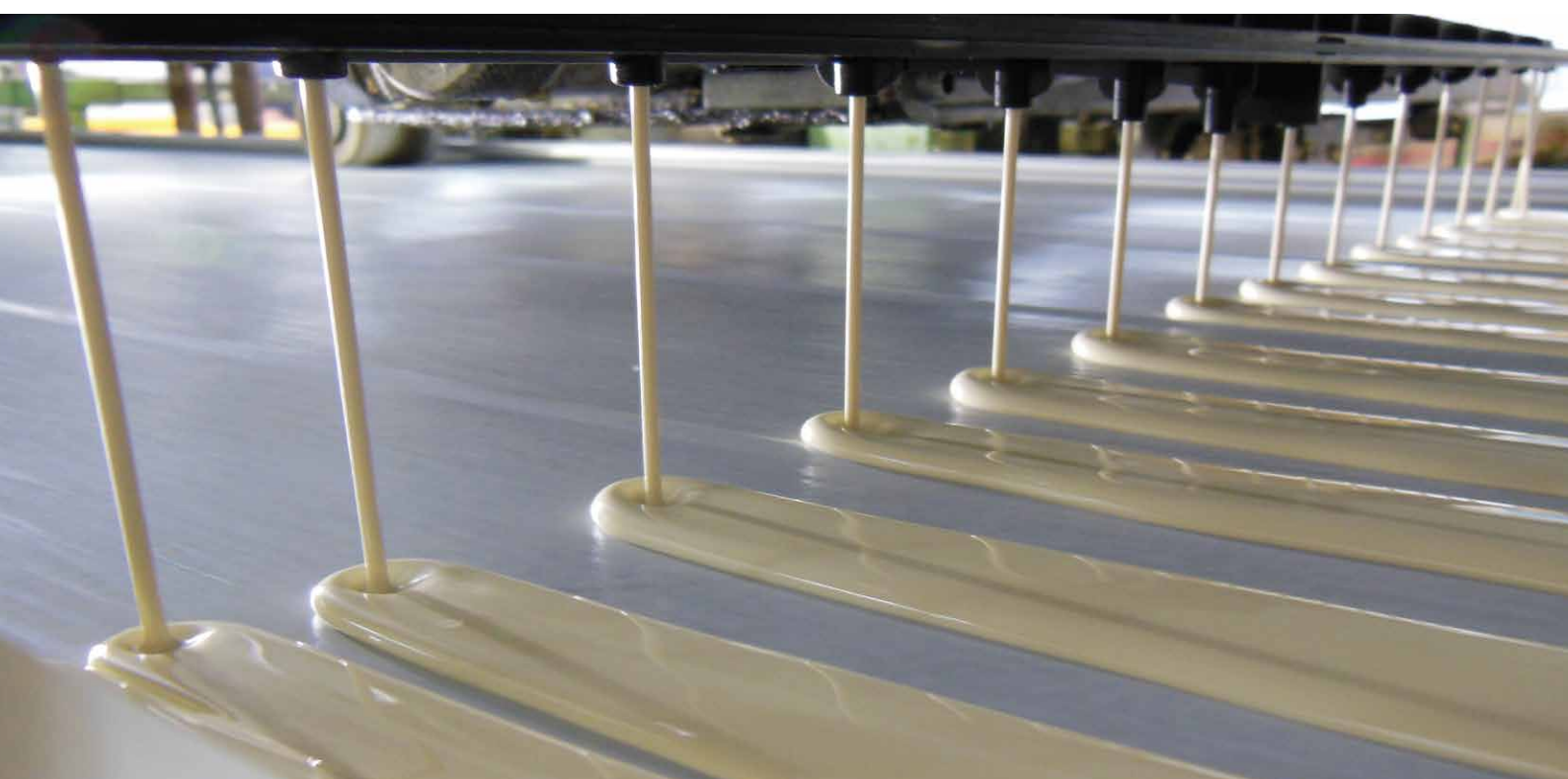
Being good at “listening” to the market enabled us to set up a Research & Development activity qualified to develop continuously products of success sustained by the most up-to-date production and application technologies, always respecting the environment.

The Company follows a code of ethics, applying a fully transparent corporate policy aimed at creating positive relations with all its “Stakeholders” (customers, suppliers, collaborators, institutions etc.). TECSEDO guarantees effective career growth opportunities for its collaborators, allowing them complete fulfilment within a full success-oriented team.





**PRODUCTION**



High quality coated steel of European origin, chemical products supplied by prestigious international groups able to guarantee the most qualified and certified polyurethane systems; gaskets and components specifically developed: these are the basic elements that assure the reliability of TECSEDO® products.

Since the start-up of the activities, the Company has undertaken a research process to identify the best components to be used for the panels production, guaranteeing their continuous improvement.

For this purpose, TECSEDO has a checking and traceability system, which enables to calibrate the limits of raw materials tolerances and deviations, securing specifications and technical characteristics compliance through the years.

The same method is applied to check the manufacturing process, operated by digital control equipment, standardised to guarantee the perfect dimensional regularity of the panels during the production cycles succession.

A cutting-edge technologically advanced plant, with short setup times, combined with production know-how developed through the years, grants to TECSEDO® products to reach the highest technical standards, and the best quality-price relationship.



**MANAGEMENT AND  
PRODUCTION TEAM**

The human resources represents a strategic value to achieve the objectives focused every day by the efforts and commitment of the whole management and production team.

Specialised, competent and willing personnel compose the lean and efficient organisational structure, factors that contribute to assure the main target of TECSEDO: customer satisfaction, of a high-qualified service within a continuous cooperation.

The constant improvement represents a fundamental value for TECSEDO. The "Team" experience and harmony are the basis of the success the company has always been willing to share with its customers and suppliers.

TECSEDO is committed that, in the "Business to Business", cooperation and reliability achieve an actual synergetic action through the whole "value chain".

Knowing how to face every day with dynamism and motivation is the real value at the basis of the human capital of TECSEDO. Rich soil made possible by a managerial vision that, through the years, has generated a system of shared principles, within which everyone is aware to contribute in a significant way to the success of the whole team.

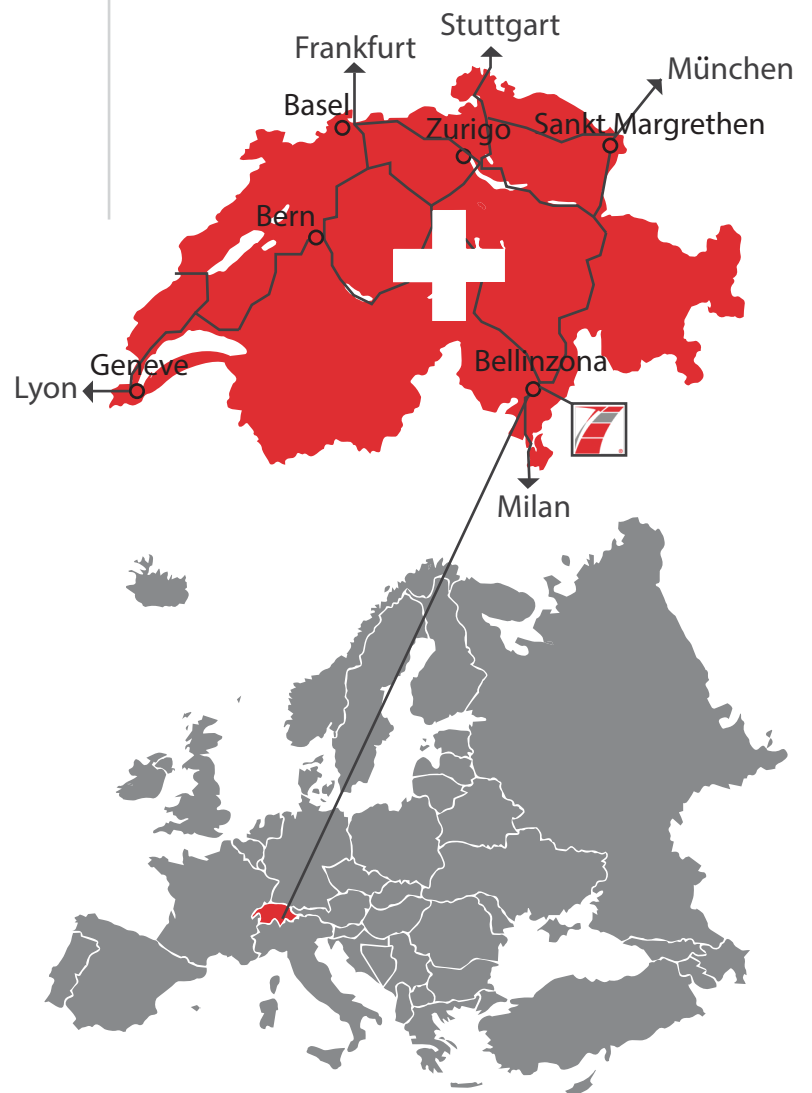


## TECSEDO SA

Via La Monda, 15,  
Z.I. Camp de Niscio  
6534 San Vittore (GR)  
SWITZERLAND

Offices and production plants are located in San Vittore, Canton Graubünden, (Switzerland) – Industrial Area, Via La Monda 15, 8 km north of Bellinzona city, at the intersection of A2 and A3 highways, 38 km from Agno airport (CH), 114 km from Milan, and about 2 hours by car from Milan Malpensa airport (IT)

# WHERE WE ARE







TECSEDO S.A. - *Technologies for sectional doors*

Via La Monda, 15, Z.I. Camp de Niscio - 6534 San Vittore (GR) - SWITZERLAND

T: +41 91 9352060 F: +41 91 9352070

e-mail: [info@tecsedo.com](mailto:info@tecsedo.com)

[www.tecsedo.com](http://www.tecsedo.com)