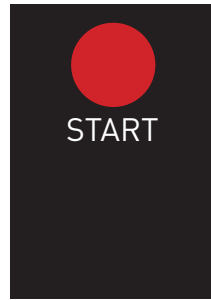


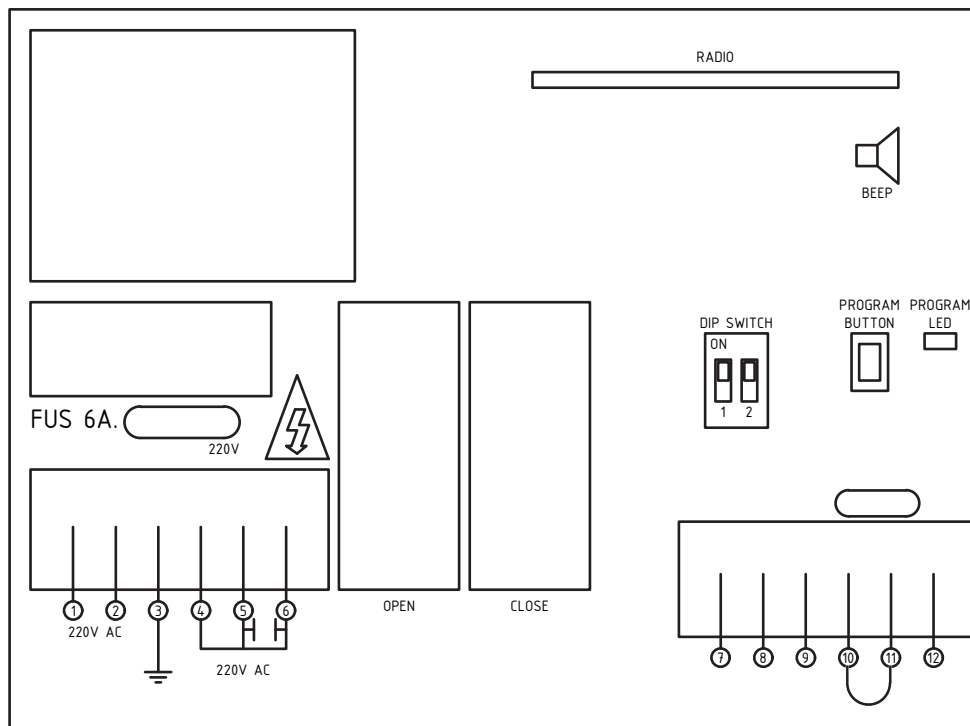
## CONTROLS



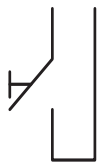
CONTROL PANEL



REMOTE CONTROL (optional)  
(Art. Code: F60AC-TX)



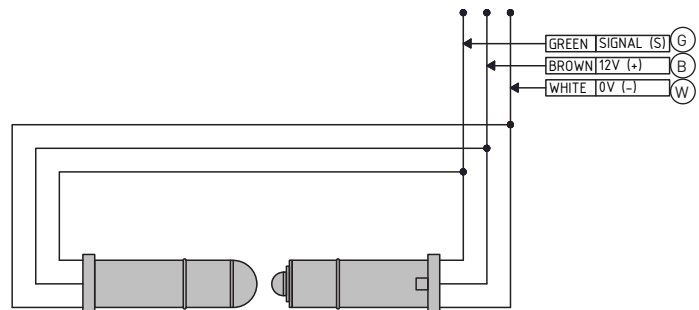
## OPTIONS



BUTTON (NO)



SWITCH (NC)

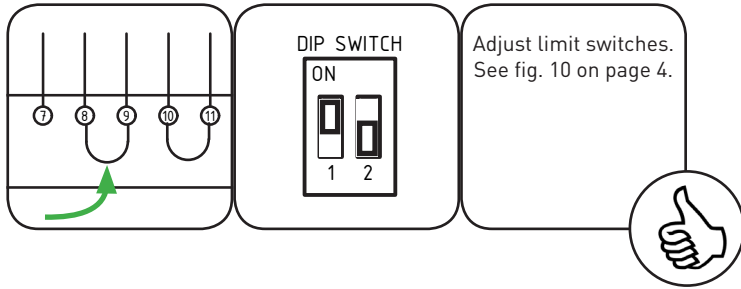


OPTICAL SENSOR (OPTO)

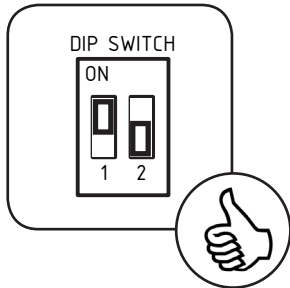
**Note:** In case of faulty opto, close door manually by using clutch, or bridge 8-9 and dipswitch 1=on & dipswitch 2=off and use deadman's close.

**Note:** Using an airswitch or relay photocell (normally closed) on terminal 8-9 (dipswitch 1=off; dipswitch 2=off) will work but is not self-testing. According to regulations a safety of this kind needs to be self testing.

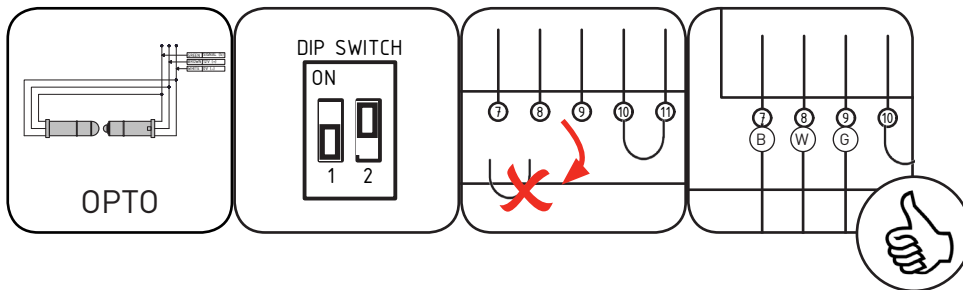
INSTALLATION:



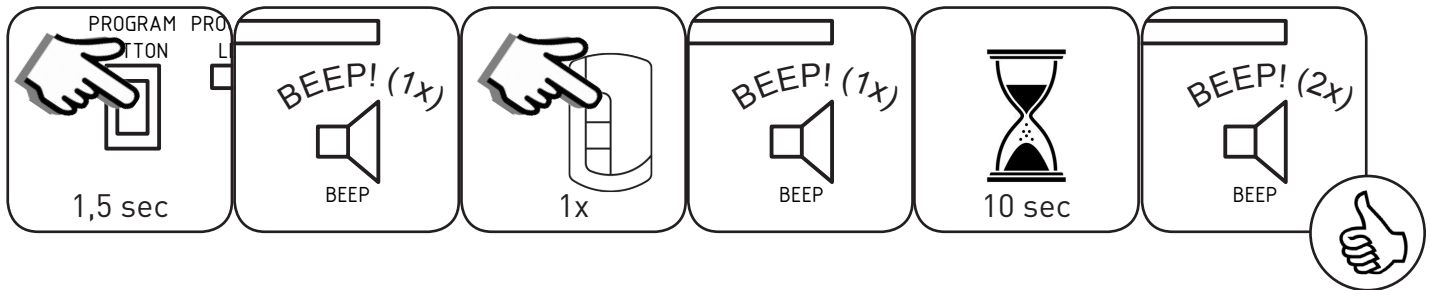
Option 1: impulse open; deadmen's close, no safety



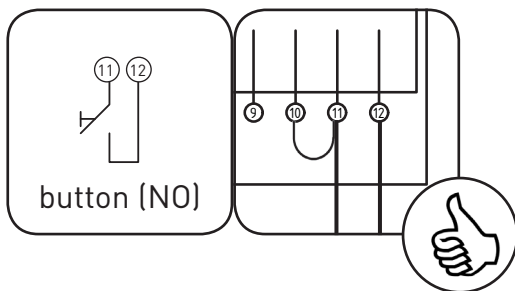
Option 2: optical sensor; impulse open; impulse close



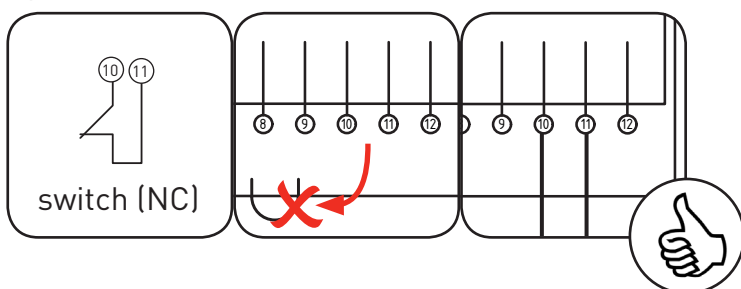
Option 3: programming remote control



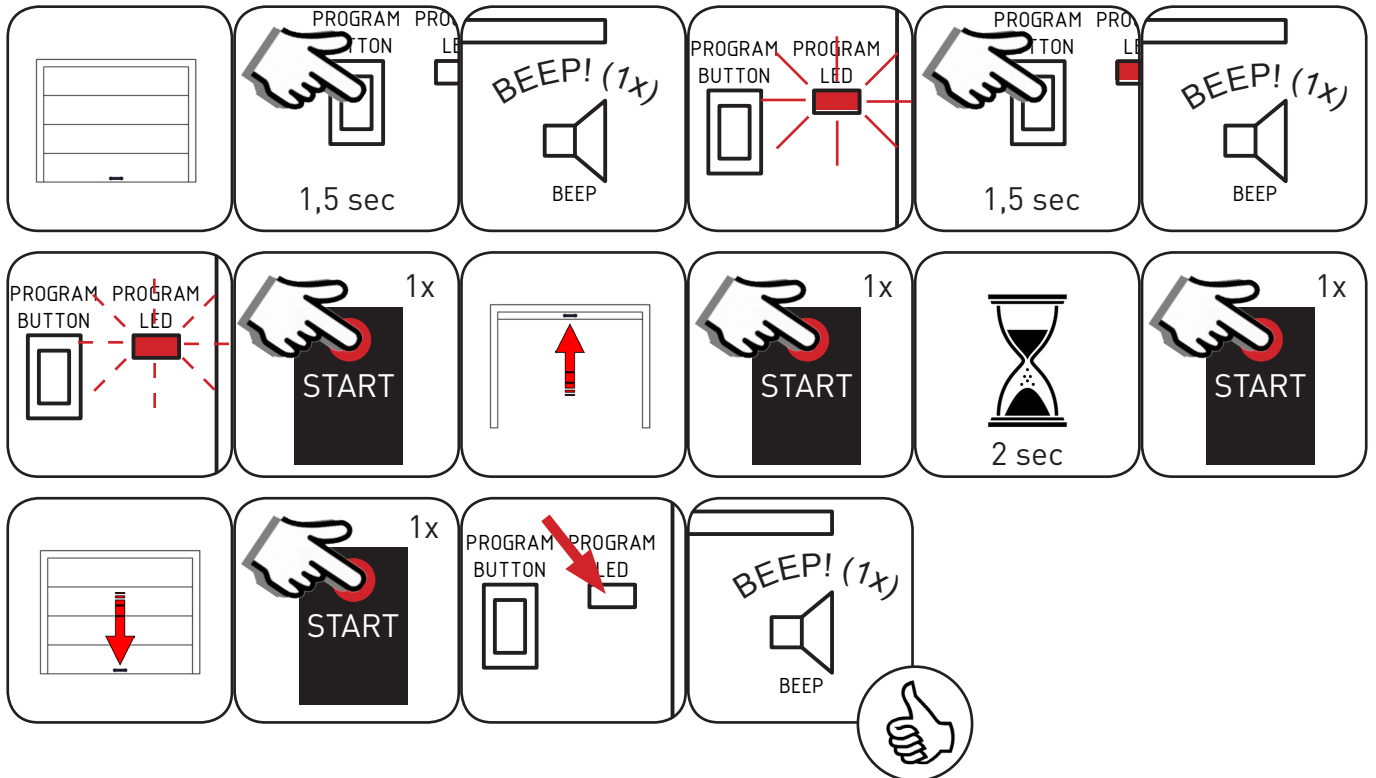
Option 4: extra push button



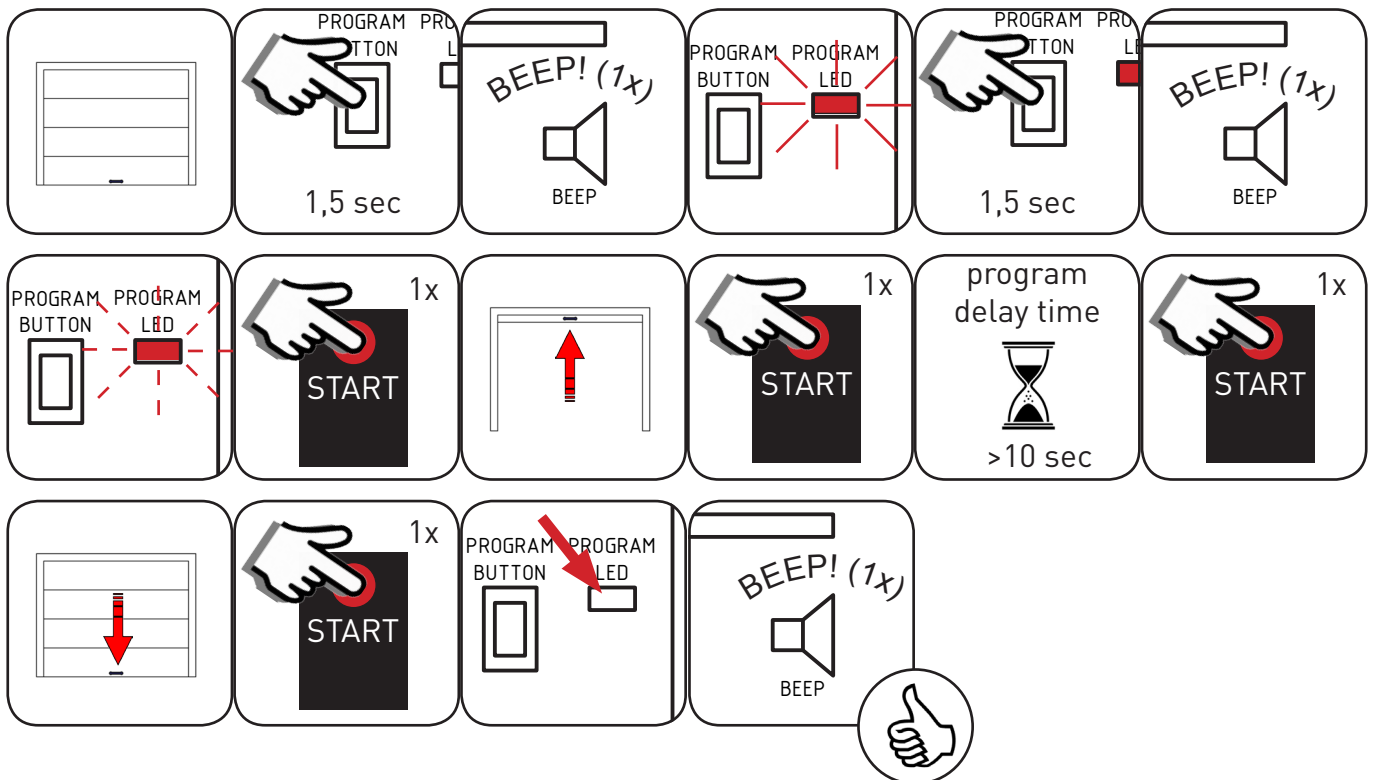
Option 5: safety switch



Option 6: program run time



Option 7: automatic closing (in combination with optical sensor only)



Factory settings / reset

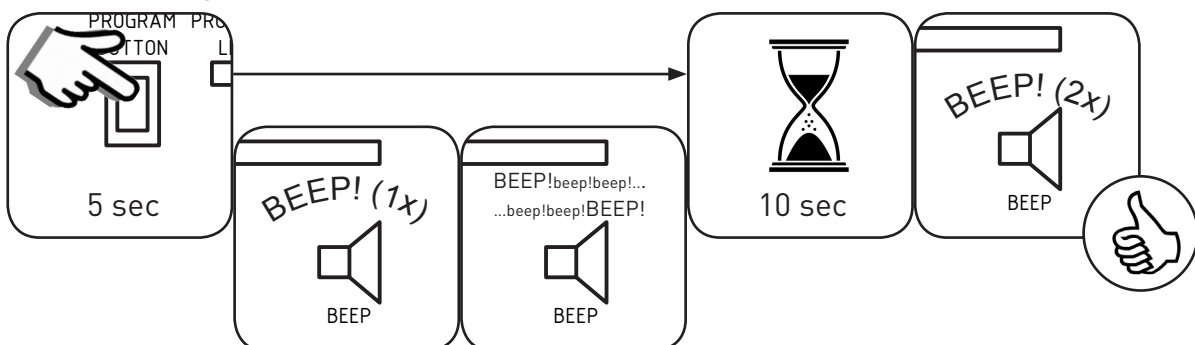
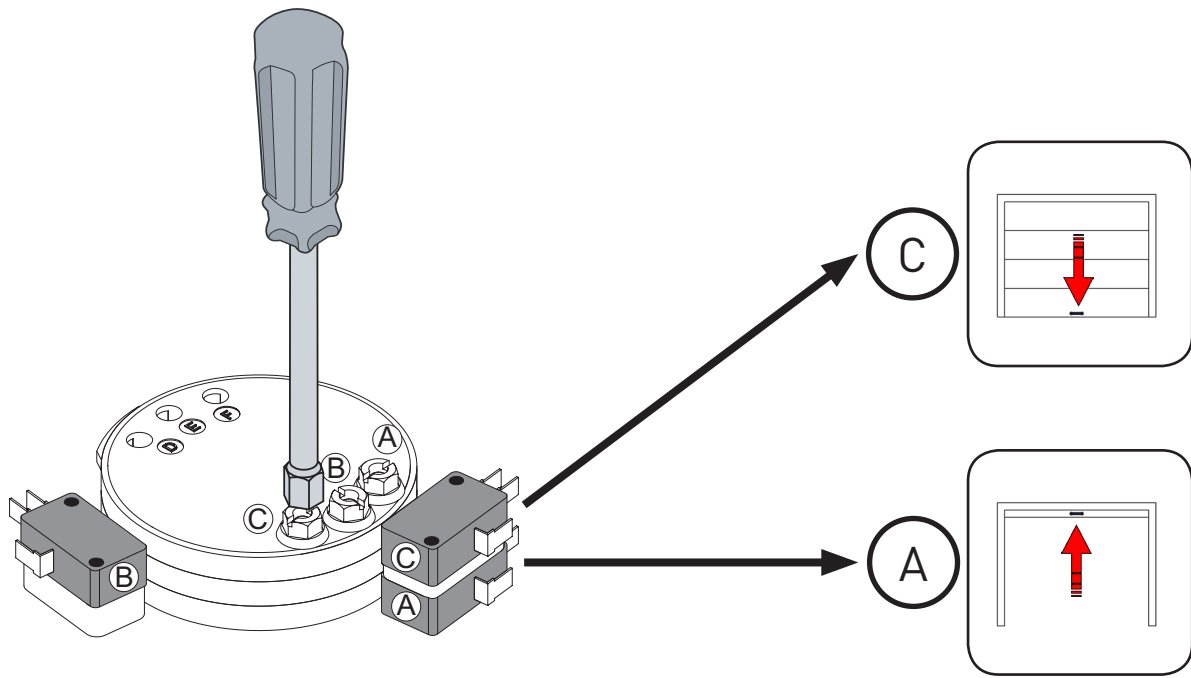


fig.: 10



### Main features

Travel control system	Mechanical rotary limit switch
Control type	Automated
Duty class	4-heavy
Duty cycles	S2=30 min / S3=50%
Power supply	230V~/50Hz
Insulation class	class 1
Input	3A
Torque	60Nm
Drive shaft RPM	22 RPM
Release system	By cable
Operating temperature	-20°C / +55°C / (-35°C / +55°C with NIO enabled)
Protection class	IP 54